
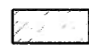
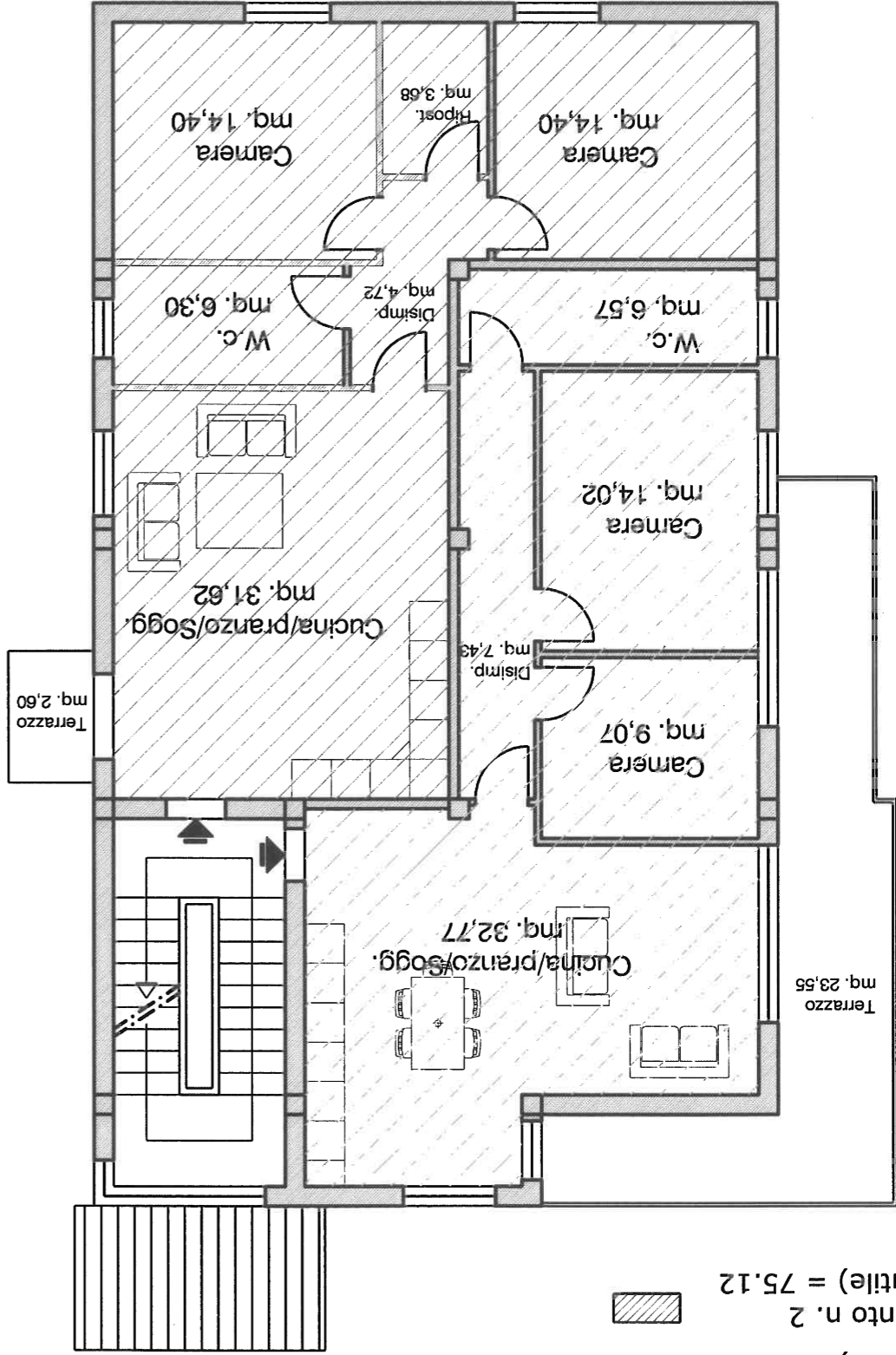
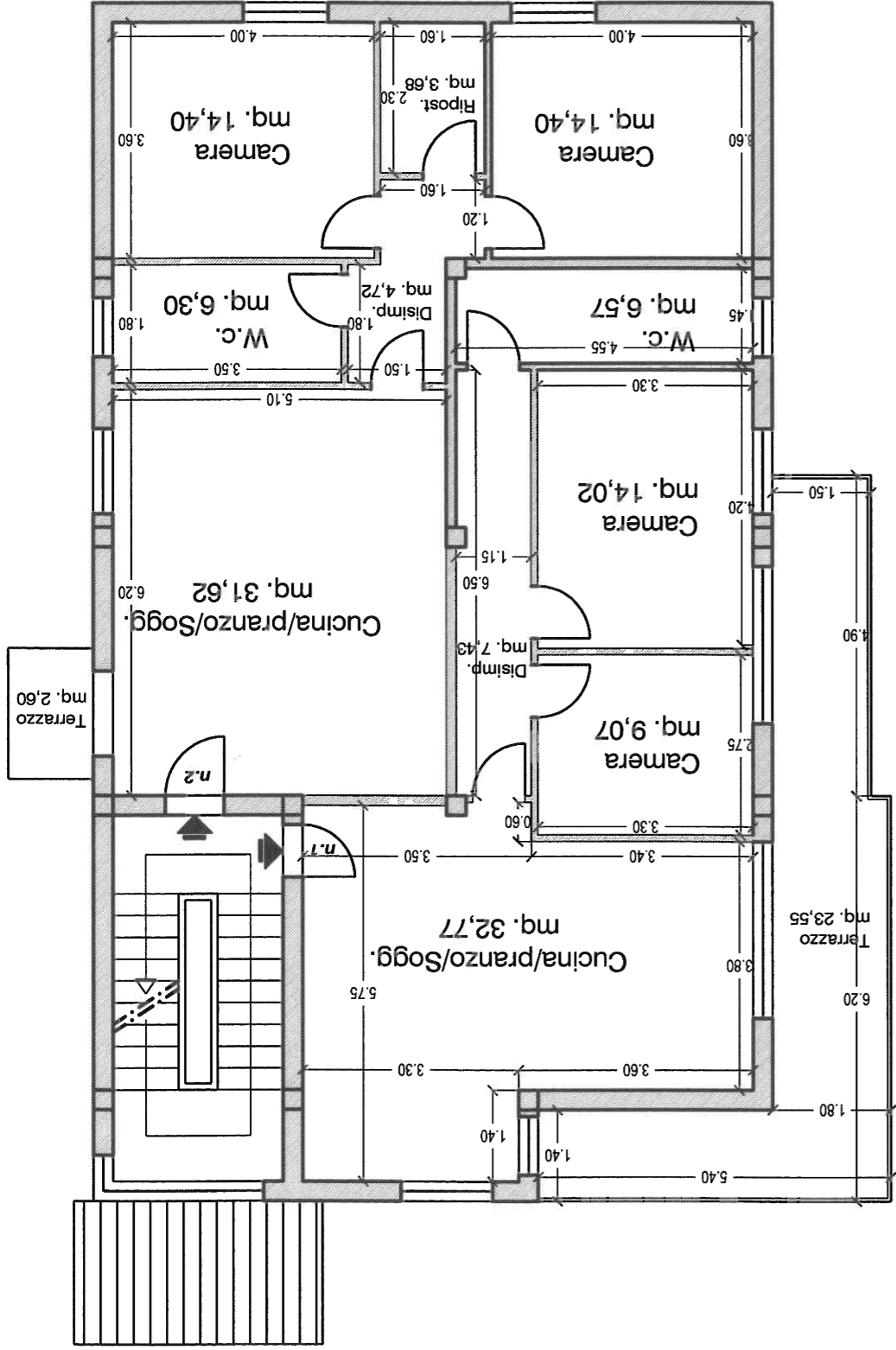


Disposizione Appartamenti - Soluzione 2 -

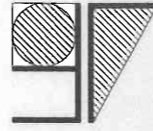
 Appartamento n. 2
 Mq. (sup. utile) = 75.12
 Appartamento n. 1
 Mq. (sup. utile) = 69.86



Scala 1:100



Scala 1:100



Studio di Architettura Associato
"ARCH. LOTTI ANDREA e ARCH. SPARTACO FRANCIINI"
 V.le Garibaldi n.2 - 53036 - Poggibonsi (SI) - P.I. 00685830523
 tel. 0577-934842-Fax 0577- 982530 - E.Mail:lottiefrancini@valdelsa.net